

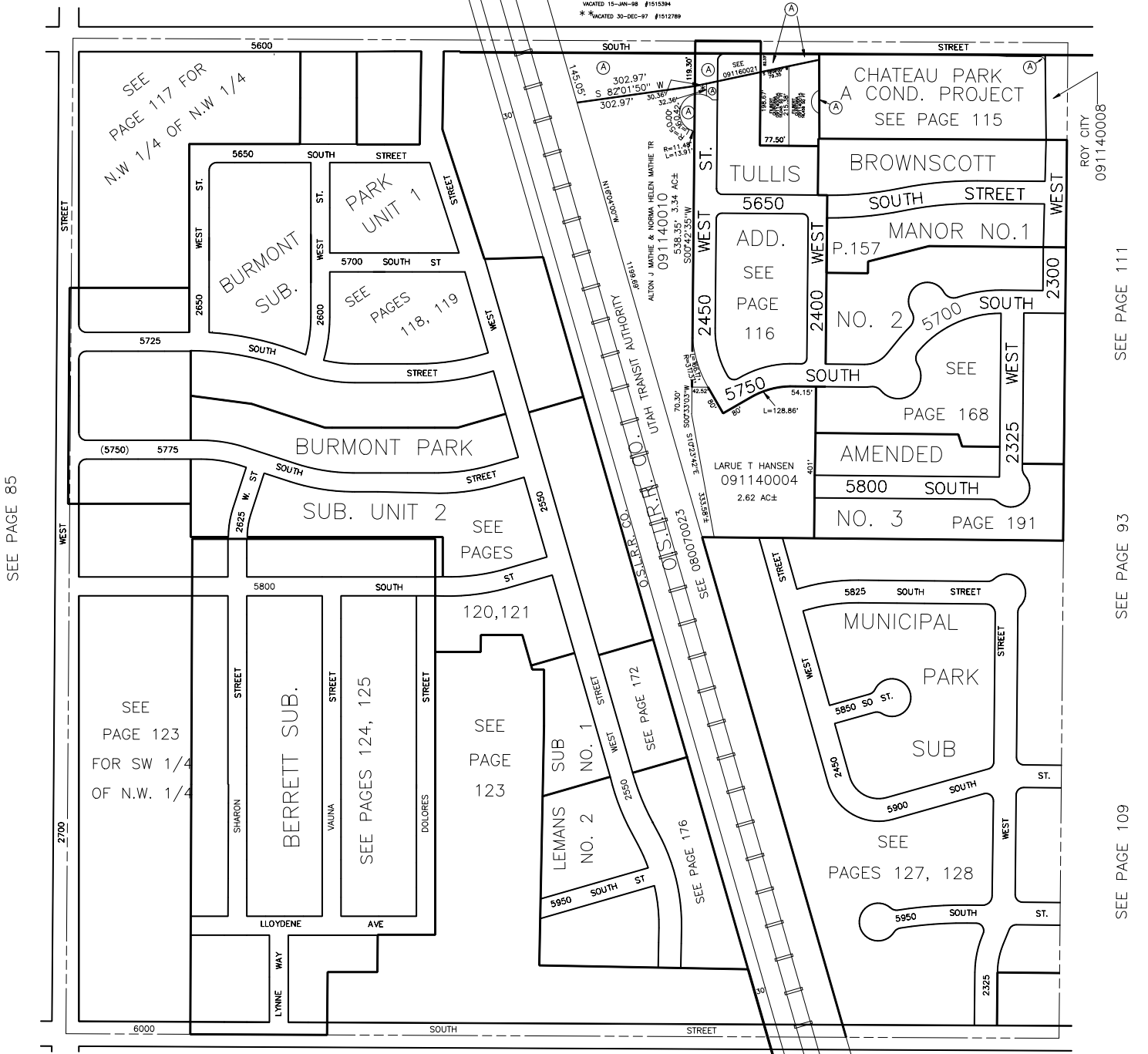
N.W. 1/4 OF
 SECTION 23, T.5N., R.2W., S.L.B. & M.
 IN ROY CITY
 SCALE 1" = 200'

TAXING UNIT: 41

(A) UTAH DEPT
 OF TRANS
 091140011
 FOR THE MEASUREMENT
 OF 5600 S. ST. 1.54 AC±

SEE PAGE 1

* VACATED 15-JUN-98 #1515394
 * VACATED 30-DEC-97 #1512789



SEE PAGE 85

SEE PAGE 111

SEE PAGE 93

SEE PAGE 109

SEE PAGE 139